

A Timeline History of the Village of Pinehurst, Pinehurst Resort, and the National Golf Club



Mid 1700s, Scottish Highlanders settle in Sandhills area...
A vast forest of original growth longleaf pines, 100 to 120 ft high.
Merchants cut the forests for timber and cultivate the best for masts for the Royal Navy.
Also harvest resin yielding tar, pitch, turpentine and resin for sealing of hulls, decks, ropes & rigging.
Turpentine is made and used for solvent and lighting.

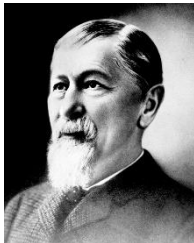
1776 Local Scots are recruited for service at Cross Hill (just west of Carthage) into a Royalist Scotch Regiment, consisting of mostly Cape Fear Scots, by Royal Governor Josiah Martin. The regiment is defeated at the Widow Moore's Bridge near Wilmington in New Hanover County. It is the first significant Patriot victory prior the Declaration of Independence on February 27, 1776.

1810 The log cabin now known as the (Pinehurst) Woman's Exchange is built, part of Ray's Grist Mill located a few miles from Pinehurst. James Walker Tufts has it moved to Pinehurst in 1895.

1850s NC pine forests are producing 1/3 of the world's supply of naval stores.

1870s The railroad arrives in the Sandhills. Large scale logging and lumber operations start.

1895 James Walker Tufts purchases 500 acres of land at about \$1.25 an acre to establish a health resort for consumptives in the Sandhills in what was then considered a "biological desert" due to the logging and soil erosion. He falls in love the glorious sunshine and pine-scented air and purchases another 5,000 acres.

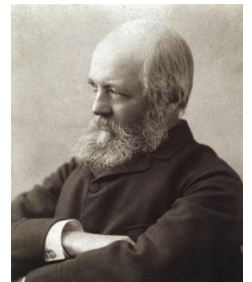


James Walker Tufts

Tufts' money came from manufacturing and selling silver plated tableware and later from creating the American Soda Fountain Company which patented and made soda fountain machines.

Tufts hires Frederick Law Olmsted (of Central Park and Biltmore Estate fame) for land design and architecture. The village is designed with a New England flavor, with curving twisted roads and a central green following the topography of the land.

Warren Manning, Olmsted's planting superintendent, plants 226,000 trees and shrubs to present an attractive evergreen landscape in winter and an abundance of flowers in early spring for the guests visiting the resort hotels.



Frederick Law Olmsted

Architects from Boston design the hotels, boarding houses and cottages, a majority of which are still standing today. The entire town is surrounded by a split rail fence to keep roaming cattle and wild boars out.

The winding streets are purposely designed to give the village charm, so that every turn would give the visitors visual surprises. "It is to be like a path through the woods."

Tufts builds all the infrastructure necessary for the village including water, sewer, electric, roads and even a trolley railroad between Southern Pines and Pinehurst to bring guests to his resort.

Tufts calls his creation, the “Village of Pinehurst.” (In some states a "city" has a different set of statutory powers than a "town" or a "village." It is not the case in North Carolina. It is simply a matter of the community's own perception of itself. As a rule, larger municipalities are styled as cities and smaller ones as towns or villages, but there are many exceptions. The Town of Cary, for example, is the seventh largest municipality in North Carolina, with more than 120,000 residents, while the City of Saluda has only a few hundred residents.)



The Holly Inn (with trolley)

The Holly Inn opens on New Year’s Eve 1895, the original center of his village concept.

Tufts quickly abandons his health resort efforts upon finding out that consumption was tuberculosis and highly contagious. He pivots to making Pinehurst a recreation-based gracious and comfortable vacation destination featuring riding, hunting, polo, lawn bowling, bicycling, archery and skeet shooting.

For many years Pinehurst is a privately held resort, sole proprietorship of Tufts family. The Village is a company run resort town, owned first by Tufts, then by Diamondhead. There were no privately-owned houses in Pinehurst until 1908.

- 1896 The Magnolia Inn is opened.

- 1897 A general store, owned by Tufts, is opened offering groceries, hardware, crockery, dry and fancy goods, clothing, drugs and stationary, as well as a meat market, a library and the village post office. It is later renamed the Pinehurst Department Store.

- 1897-8 According to local golf lore, some hotel guests introduce a new game to Pinehurst by hitting little white balls in the dairy cattle grazing fields that surround the village. The cattle were not at all not pleased.

- In February of 1898 a rudimentary nine-hole golf course is constructed, then later expanded to 18 holes. The course is designed by Dr. Leroy Culver and John Dunn Tucker and became Pinehurst #1.

- 1899 Tufts hires a Scotsman, Donald Ross, to be the first golf professional and to be responsible to develop golf. Ross was a Scottish golf architect who had apprenticed in St. Andrews under the famed Scot golf player and golf architect, Old Tom Morris, and who had been instrumental in improving the Old Course at St Andrews and designing the New Course and the Jubilee Course. Ross spends the rest of his life in the US. He was involved in designing or redesigning around 400 golf courses between 1900–1948.



Donald Ross

- 1900 The Carolina Hotel is opened, an afterthought to the original village plan.

Most virgin growth of longleaf pines is gone from the Sandhills. The area is nothing but wire-grass scrub oaks and damaged pines.



The Carolina Hotel

Early 1900s Pinehurst hosts equestrian events, including polo and harness racing. The American Horse Show Association has recognized Pinehurst as having had some of the earliest horse shows in the country. The climate, being dry and mild, was perfect for the winter boarding of horses.

1901



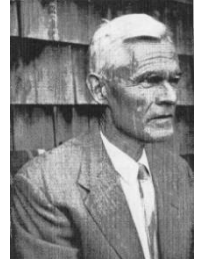
George Dutton

First golf championship is held at Pinehurst: United North & South Amateur Championship, won by George Dutton.

1902

James Tufts dies. Control of Pinehurst passes to his son, Leonard Tufts.

Rassie Wicker is hired by Leonard Tufts and used in a variety of positions. "The Wizard of Pinehurst." Surveyor of the village, home builder for Tufts, cartographer of Moore County, landscaper working with Olmsted's Manning assisting in dressing up the Pine Barrens, town planner for the Village, writer of the local history - he was also interested in astrology, botany, piano, singing, and birding. Truly a "Renaissance Man."



Rassie Wicker

1907 Pinehurst #2, designed by Donald Ross, is opened. "The fairest test of championship golf I have ever designed." It was no coincidence that the course resembled the Old Course of St. Andrews. Its green sites are the ultimate test, legendary and unique with wicked fall-offs around the edges. Vivid imagination and the finest skill are required to negotiate the greens in regulation. It is considered a complete course and one of the most finely balanced and difficult courses in the world.

1909 Prohibition is passed in North Carolina. Bootlegging and home brewing start. Fast cars were used to move the liquor and for eventually, NASCAR's resultant birth.

1910



Lucy Richards

The Putter Boy Statue is created at the suggestion of Gertrude Tufts, the wife of Leonard Tufts. The sculptress was Lucy Currier Richards. Gertrude and Lucy were close friends. Lucy's inspiration for the statue was Pinehurst's "Golf Lad," developed by Frank Presbrey who ran Pinehurst's advertising agency in NYC. The Putter Boy appeared in early advertising and on calendars sent each year to guests and travel agents to promote the resort. It has served as the well-known trademark of Pinehurst golf ever since.

Pinehurst #3 designed by Donald Ross opens.

1912-1913 The streets west of Beulah Hill Road are opened. They were planned and laid out to follow Olmsted's concept of the original village.

1913 The Pine Crest Inn is opened and sold to Donald Ross and fellow Scotsman James McNabb. They owned and operated the Inn until Ross's death in 1948.

Donald Ross redesigns Pinehurst #1.

1914 Robert Frost publishes "Mending Wall." (Do good neighbors make good fences?)

1916 Annie Oakley and her husband move to Pinehurst. The Pinehurst Gun Club by then was world famous for international trap and skeet shooting, and Oakley's shooting exhibitions thrilled the resort guests.



Annie Oakley

WWI

1919 Pinehurst #4 opens, designed by Donald Ross. Redesigned most recently in 2017 by Gil Hanse.

1920 Corporate ownership is formed with a charter for Pinehurst, Inc., all owned by Tufts family.

1922 The Theater Building opens, seating 444 in the orchestra and 212 in the balcony. It hosts Gloria Swanson, Will Rogers, Norma Shearer, Helen Hayes and members of the Metropolitan Opera, among others.



The Theater Building

1923 With four Donald Ross golf courses and three thriving inns, Pinehurst Resort is considered a national golf destination.

1924 The Village Chapel is built, the first building on the Village Green.

1927 A 33 bed hospital with a staff of 27 opens on Thanksgiving Day. One of the most important events to take place in Moore County, the Moore County Hospital is “built by the people of Moore County to serve all the people of Moore County.”



Moore County Hospital, early

The early days were not easy for the hospital. The stock market crashes one month before the hospital opens and the nation is on the brink of The Great Depression.

Mrs. Leonard Tufts organizes an auxiliary of Sandhills women to support the hospital by mending hospital linens, helping new mothers, loaning a milking cow and laying hens, and raising money to purchase a station wagon for community outreach.

Over the next 90 years the hospital adds additional services and specialties, and today has 400 beds, 250 physicians, and a staff of over 2,700. In 2017 and 2018 it is recognized as one of the top 100 great community hospitals in the nation serving 15 counties through direct care and referrals.

Depression Pinehurst employees are paid in scrip redeemable only in Tufts run businesses in Pinehurst.

1930-1931 Amelia Earhart, a frequent Pinehurst visitor, exhibits her Pitcairn PCA-2 gyroplane, a forerunner to the helicopter, at the Moore County Airport.



Amelia Earhart with her gyroplane

1936 Pinehurst #2, the PGA Championship is held. A match play championship, Denny Shute, representing the USA, wins the first of his consecutive PGA Championships, defeating Jimmy Thomson, 3 & 2. The purse is \$7,200; the winners share is \$1,000. There are 113 players.

1937 Prohibition ends in North Carolina with the establishment of a state-wide system of county run ABC boards. The NC Legislature had observed in 1935 that two thirds of the state's population lived within 50 miles of the Virginia and SC borders and apparently crossed over to buy liquor legally, and a lot of it - therefore the money spent in neighboring states represented a huge loss in potential tax dollars for NC.

Liquor is sold only in counties that elect to sell it and although they could sell beer and wine, sales of bottled spirits are not allowed in restaurants or private clubs, introducing a new custom: brown-bagging.



Revenooers in action

WWII

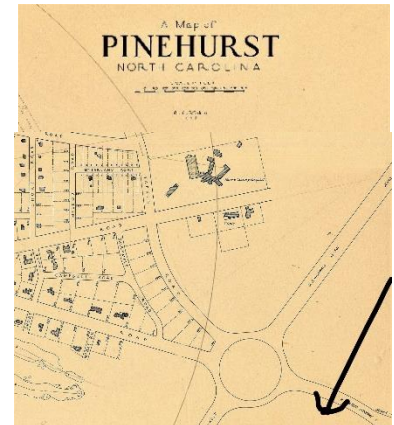
1946 Pinehurst Surgical is founded, a multi-specialty clinic within the walls of Moore Regional Hospital. Since 1946 it has grown to a board-certified staff of 42 and a professional staff of over 250 with a range of 12 specialties in nine locations covering five counties and with a 10-county secondary service.

1951 Pinehurst #2. The Ryder Cup is held. The United States team wins their fifth consecutive competition by a score of 9½ to 2½ points. Among others, the team features Sam Snead, captain, and Ben Hogan.

Korean War

1950s During the Tufts era the population of the village and surrounding area is 1,100. By the '50s the village and the surrounding area grows to over 7,000.

1956 The Pinehurst Circle is built. Tufts donates the land and the right of way from 15-501 at the entrance of Pinehurst #6 to Watson Lake in Aberdeen. Rassie Wicker draws up the plans for the circle. The Tufts thought the circle would make a pretty entrance to the village. When Diamondhead bought the resort and country club and began to market thousands of building lots, state officials began to realize they *might have* a traffic problem.



The First Circle; arrow is location of #9

1957 The hospital grows to 93 beds. The Pinehurst Medial Clinic has started (circa 1953) offering a wide range of primary care and specialty care services to the citizens of Moore County and the surrounding counties. Today more than 100 physicians at Pinehurst Medical offer primary care and 17 specialty services to Moore County and nine surrounding counties.

1959 Jack Nicklaus wins the North & South Amateur on Pinehurst #2. "Pinehurst #2 from a design standpoint has always been my favorite."

1961 Pinehurst #5 opens, designed by a protégé of Donald Ross, Ellis Maples.

1966 Sandhills Community College opens with 400 students. Mary Luman Meyer donates 240 acres on Airport Road for the college. SCC quickly realizes the need for additional classes to support the growing healthcare and hospitality industries and immediately adds 200 more students. Today it offers more than 100 Associate degrees, diplomas and certificates.

1968 The Village has one park, Cannon Park, with 2 softball fields, 2 rundown tennis courts, and some old playground equipment.

1970 Shareholders (Tufts family grandsons) of Pinehurst, Inc. decide to sell the resort property to Diamondhead Corp, which was formed in 1968 and owned by Malcom McLean who was born a short distance away in Maxton, NC. McLean had made his money in trucking and had reformed maritime shipping by inventing intermodal shipping containers and commercial container ships (Sea-Land Industries).



Malcom McLean

Diamondhead creates 7,000 lots or units for sale with membership rights to Pinehurst Resort. Houses created around the golf courses which are used to market the properties. Infrastructure (roads, water, sewer) is also constructed at this time. Diamondhead's concentration is on golf course condominiums at the expense of the hotels and golf courses.

Vietnam War

1973-1982 Pinehurst #2. World Open Tournament. (The Hall of Fame Tournament) is a golf tournament on the PGA Tour from 1973 to 1982 played at Pinehurst which was home to the World Golf Hall of Fame at the time.

It is first played in 1973 as the World Open Golf Championship. It is a 144-hole tournament (twice the normal size) contested over two weeks. The 240-player field is cut after 72 holes to the top 70 plus ties who play the remaining 72 holes. It offers the largest purse (\$500,000) and first place prize (\$100,000) in PGA Tour history at that time.

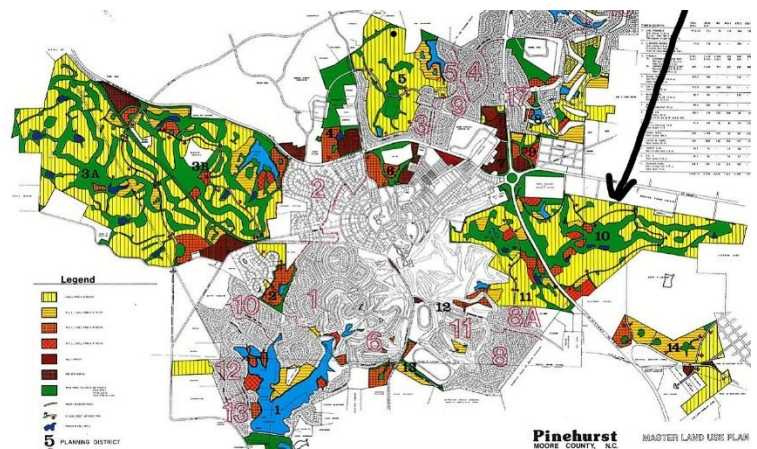
1977 Carolina Eye Associates is established. Today it is one of the largest eye care practices in the Southeast with 12 regional eye care centers in North and South Carolina. The center in Pinehurst/Southern Pines offers a fully accredited eye surgery center.

1978 The North Carolina legislature passes a liquor by the drink law on a local option basis. In Moore County only four towns had passed the required election: Pinehurst, Southern Pines, Aberdeen and Carthage, as they had previously established ABC Stores. However, Pinehurst is not eligible to sell liquor by the glass until 1980 as the law that the Legislature had passed authorized the sale of liquor by the glass only in **incorporated** cities and counties. Pinehurst was not yet incorporated. Oops!

1979 Diamondhead's Pinehurst creates an ambitious master plan laying out a huge expansion of 5,000 acres with an additional 9,500 dwellings, including the properties known later as Pinehurst #7 and Pinehurst National #9.

Pinehurst #6 opens, designed by George and Tom Fazio.

1980 The "Village of Pinehurst" becomes an incorporated municipality. The bar is finally open!



Diamondhead's Master Use Plan from 1979; Arrow points to planned #9

- 1982 Diamondhead goes bankrupt. The Pinehurst properties are acquired by a set of banks. "The golf courses have been neglected. Hotels are sagging." The assets of Pinehurst are valued at \$31 million and the corporate debt is \$73 million.
- 1983 The eight banks holding loans on the assets of Pinehurst Hotel and Country Club start selling off non-resort parcels of land to developers.
- George R Perkins Jr, Truby G Proctor, W M Womble Sr, and Samuel J Wornom of Sanford purchase 512 acres one half mile from the circle between 15-501 and Midland Road from Pinehurst, Inc. calling themselves Otter Pond Investment Group. The property later becomes Pinehurst National Golf Club.
- 1983-late 80s Golf years. Baby boomers born in the '40s trade their tie-dyes for golf clubs. These are the years of the growth of middle age wealth and housing. TV comes of importance with golf featuring Nicklaus and Palmer, Lee Trevino, Ray Floyd, Chi-Chi Rodriguez. In 1950 only 9% of American households had television; by 1985 98% had television and almost 50% have cable.
- There is construction of multiple golf courses in the area. Fairways on 7 and Pinewild as well as Pinehurst National are started.
- 1984 The Pinehurst Resort including the hotels and the golf courses are sold to Robert H Dedman Sr, founder of ClubCorp. He had seen how developers were buying land at \$2,000 an acre and turning it into property worth \$200,000 an acre providing home sites in a golf course atmosphere with a private club for "regular folks." "Their home might be a \$300,000 home, but by being on a golf course, it becomes part of a \$10 million estate."
- Dedman also develops the idea of building multiple golf courses around a clubhouse to increase the income while not increasing operating costs.
- His company concentrates on golf club purchases, which hold pro tournament events, and large upscale resorts.
- "I had always venerated Pinehurst for its place in the history of golf, and when I finally saw it, I knew instantly that we would take this fallen angel and make it not as good as it was, but better than it had ever been." He plans major investment in Pinehurst.
- Village population 2,000-2,500
- 1986 Michael W Sanders, who had been the Director of Golf and Head Golf Pro at Pinehurst Resort from 1979, resigns the Resort and joins with J Allen Jordan, to build and market a Jack Nicklaus golf course in a private, gated residential community to be financed by Tri City Inc., which was owned by Claude F. Smith Jr. of Rockingham. Jordan was also the nephew of Claude Smith.
- During a span of more than 25 years, Nicklaus had won a record 18 major championships while producing 19 second-place and 9 third-place finishes. Many observers in the 80s and 90s regarded him as the greatest golfer of all time.
- "Mike Sanders and Allen Jordan contacted me and said they had this property and it was really special. I told them to put a package together and I'd be there" --Jack Nicklaus
- Mike Sanders, as Director of Golf of Pinehurst Resorts, had overseen the building of Pinehurst #7 (1986, designed by Rees Jones) for ClubCorp and almost certainly had known of Diamondhead's aggressive expansion plans from 1979. Allen Jordan from Rockingham was the President of JAJ Realty and



Robert H Dedman, Sr

Construction Company and had been involved with a wide variety of development projects in Topsail Beach and in Myrtle Beach. JAJ was also the contractor of record for Tri City.

Sanders becomes the president of "Pinehurst National Golf Club" and responsible for club and golf course development. Jordan becomes the president of "Club Development Corporation" and responsible for golf course and infrastructure and real estate, which was owned by Pinehurst National Corporation. Each serve as each other's vice president.

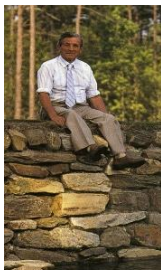
1987 512.79 acres of land between 15/501 and Midland Road, one half mile from the traffic circle is purchased from Otter Pond Properties in Sanford, purportedly for \$5 million. The property, located in Southern Pines, had been annexed to Southern Pines based on "extraterritorial jurisdiction". The 60-foot-wide Midland Road entrance on 1.4 acres of land was sold to PNGC by Althea S Myers who owned the adjacent property on Midland. Pinehurst Planning and Zoning Board approves the entrance on June 15, 1987 over "spirited objections" of other neighbors who lived almost on top of the proposed entrance. They were concerned about the potential traffic problems and the aesthetics of the proposed entranceway.

Nicklaus is paid \$1 million. Golden Bear, Inc., a Jack Nicklaus company, is retained to design and build the golf course and paid what was estimated as several times that to build the course.

Construction starts on Pinehurst National Golf Club. It was the only Nicklaus golf course in the Sandhills and only one of two Nicklaus courses in North Carolina at that time.



Allen Jordan, Mike Sanders and Jack



Charlie Batten

Nicklaus calls the property "absolutely beautiful with its rolling hills, magnificent pines and variety of lakes."

Nicklaus sets the course parameters, the directions of the holes, the balance of the par 3s, 4s and 5s. He then walks the proposed layout. After clearing, he walks the layout again before moving any earth. Because of the Ross legacy of Pinehurst, Nicklaus takes extra care to ensure that his course enhances the reputation of this golf-rich region. His goal is to make the National Golf Course as natural as possible. He brings in a Devonshire, England stone mason named Charlie Batten to build stone walls to support the 5th, 9th, 10th, and 18th greens. The stone walls give the course accent and definition to hazard banks, and Greens perimeters' walls are completed without the aid of any cement or other adherent. It takes another year for grassing and course maturation before the course can be opened.

1988 Pinehurst, population 2500, most retirees. "A seasonal tourist outpost."

Pinehurst National Golf Club course is completed. 475 home sites laid out around the golf course with six ponds, four stone walls, and provisions for tennis courts, a swimming pool and a clubhouse. One of the ponds, Otter Pond, was rumored to be a favorite swimming hole of the Tufts children.

PNGC marketing plan over a 20-year period is that the home lots will be sold for \$40-60 thousand each and the Golf Club will be limited to 600 memberships at \$10 thousand each. There were to be 20 founding members who would be part of the initial funding of the project. Home plans would be subject to an Architectural Review Board.

Marty McKenzie, president of the McKenzie Company, general partner in the Brady Partnership and current owner of Olmsted Village, along with Jim Hildreth are to oversee the real estate, land development and the promotion of the homesites.

First year sales are concentrated on National Drive, Leven Links, Royal County Down, Woodenbridge and Royal Dublin Drive. Pinehurst National Corporation sells 106 lots in 1988.

Two lots, "Founders Point", on Ballybunion, are purchased by the Sanders after the first 100 lots were sold to prospective club members.

The Club Cottages are slated for an October 1988 opening. The Club Cottages were fractional ownership (timeshare) units. Buyers would purchase weeks to use during the year and receive access to all amenities during their stay. Ownership was transferable, and they would have a link into a global time share organization (RCI-The Registry Collection), where they could trade their week to stay at other venues with other RCI owners.

American and Japanese investors purchase 50% of Pinehurst National in November to increase the financial strength of the development company. Big Japanese money came into the USA during the prosperous years of the Yen. In 1985 the G-5 sign an accord pledging liberal trade policies to stem the US trade gap. It works, and the value of the dollar falls in relationship to the Yen, but it also creates a huge Japanese buying frenzy in the USA.

Rising interest rates from 1986-1989, the 1990 oil price shock from the 1st Gulf War, over saturation of golf real estate market put a crunch on high end development. "It was a thorny period of membership ownership."

1989

The first homes in The Pinehurst National Golf Club are occupied. PNGC reports that it had passed \$10 million in homesite sales.



The first home, built on Whinhill Court

Sales on Lochwinnoch and Cruden Bay commence.

A new board, a Member's *Advisory* Committee consisting of six local members, is appointed by the developer to act as *interface* between members and club management and the developer.

Opening day for the course is April 26, 1989 and features Jack Nicklaus alongside the head golf professional, Roger Mack. 150 are expected; 600-700 people show up. Nicklaus shoots a 4 under 68 while using every club in his bag except his 1-iron. "It's exactly what I envisioned. It sits in the terrain beautifully, so naturally. Every hole is unique and looks like it has been there for a long time." Nicklaus calls the putting surfaces "spicy."



Opening Day

"It is a tribute to Ross forcing a golfer to use all the clubs in his bag and all the shots in his repertoire," says Sanders.

In December Mike Sanders and Allen Jordan leave PNGC to develop other golf properties.

1990

The Pool and Tennis clubhouse opens at Pinehurst National Golf Club. A new general manager, W Cary Brent, is hired.

Pinehurst Village buys the Pinehurst Harness Track property for \$1.1 million. Private citizens raise \$2 million to restore The Fair Barn and the track. The track had been a winter training center for standardbred horses since 1915.



The Fair Barn

The Fair Barn is the oldest surviving early 20th century fair exhibition hall in North Carolina. The track and the barn create space for Village events and parking for the resort during golf tournaments.

Pinehurst (census) population 5,103.

Sales on Dungarvan and Greencastle commence in late 1990. The concept is to offer small "village lots", minimal yards, but with single family custom houses. The homes range from 2200

to 3500 square feet. Each house plan is to be approved by the ARB and the goal is to have an area with unique custom homes.

By the end of 1990 almost half the lots in Pinehurst National are sold.

1991 & 1992 Pinehurst #2. Tour Championship, the top 30 money winners on the PGA Tour. The winner is Paul Azinger, USA. The purse is \$2 million. The winner's share is \$360,000.

1991 The clubhouse for Pinehurst National opens. Grill Room, formal dining room, party facilities, Pro Shop, men's and women's locker rooms, golf cart storage, and Club offices. Initial cost of the clubhouse is \$5 million.

A new general manager, Woodie Davis, a business associate of Claude Smith, is hired. The Members Advisory Committee is replaced by an Executive Council elected by the club membership and member committees formed to *advise* Department Heads.

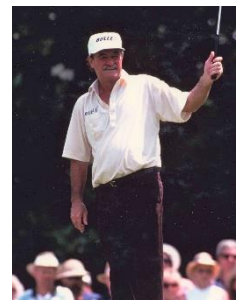
The properties on St. Mellion are put on the market.

1992 Claude Smith purchases the neighboring Pinehurst Plantation golf property which includes a partially completed golf course designed by Arnold Palmer, and undertakes to complete it. Woodie Davis tells the press there is no thought to combine both courses under one club.

1994 Pinehurst #2, The US Senior Golf Championship is won by Simon Hobday, 54, of South Africa. His first three rounds are considered brilliant, but on the final day he shoots a 3 over par 75 and is tied going into the 18th hole where he holds on to win by one stroke. The purse is \$800,000, and the winner takes home \$145,000.

The five-year-old Village Hall burns down and with it, a great deal of its records.

Pinehurst purchases 100 acres off Rt 211 and west of Rattlesnake Trail for a retirement center, plus municipal offices and parks operation.



Simon Hobday

US Golf Communities of Florida headed by Warren Stanchina purchases a 60% interest in the unsold residential properties of Pinehurst National. Claude Smith retains full ownership Pinehurst National Golf Club.

Pinehurst Resort threatens lawsuits for trademark infringement to any businesses in the Pinehurst area to stop them from using Pinehurst in their business names including Pinehurst National Golf Club and Pinehurst Plantation. Their claim is that they have the sole right to use "Pinehurst" in connection with any golf or resort related activity. The incorporation of the town as the "Village of Pinehurst" dated back to 1980, and the corporation's position is that there is no "Pinehurst", just the "Village of Pinehurst" incorporated by Tufts and owned by ClubCorp.

The lawsuit affected many small businesses, but primarily Pinehurst National Golf Club and Pinehurst Plantation who go to court to fight it.

- Mid 90s More families with young children move into Pinehurst Village. The Village creates a Park & Rec Dept and a Parks & Rec Master Plan.
- 1995 The members purchase Pinehurst National Golf Club and its amenities as provided in The Club Purchase Agreement with Claude Smith. Members of the Executive Council become the Club's Board of Directors. Claude Smith buys back US Golf's ownership of the unsold residential properties, and US Golf Properties buys all of Smith's interests in Pinehurst Plantation. (US Golf Properties goes bankrupt in 1999.) A new general manager, Robert Leidigh, is hired at Pinehurst National.
- Moore Regional Hospital is selected by Modern Healthcare Magazine as one of the top 100 hospitals in the nation. Using that high quality as a base, the hospital joins with Montgomery Memorial Hospital in Troy NC to form FirstHealth of the Carolinas and changes the hospital name to FirstHealth Moore Regional Hospital, "the big city hospital, here in the country."
- 1996 Pinehurst Village gets the National Historic Landmark designation, the 1st golf and resort community to receive this designation.
- The club's infrastructure needs attention. The members of Pinehurst National, unwilling to undergo further increased dues and special assessments and needing to meet operating expenses, sell the Club back to Claude Smith in return for Mr. Smith assuming the Club's financial obligations and promising improvements. A new class of membership is offered to the members, Legends memberships, which allow for a play at both Pinehurst National and Pinehurst Plantation in return for a higher level of membership fee. The Board of Directors become the Operating Board of Directors and are given certain responsibilities and authority under the Club's new By-Laws. Intergolf is brought in as a consultant professional management company and a new general manager, Chris Calvert, is hired.
- Pinehurst #8 opens, designed by Tom Fazio.
- 1st comprehensive development ordinance for new construction for the preservation of open space in the Village.
- 1997 New Village Hall on Rattlesnake Trail property.
- 1998 There are 53 single family homes, 10 town homes and four cottages; 10 additional in planning or construction stages in Pinehurst National Golf Club.
- The Pinehurst Resorts lawsuit is settled in favor of the resort and Pinehurst National Golf Club changes its name to the National Golf Club. The suit is decided in the US Court of Appeals. The suit has been brought in the Federal Court in Virginia, much to the dismay of the National Golf Club owners who hoped to have the suit tried in state courts local to Pinehurst where they thought they would have a friendlier outcome. It is a costly legal battle for the club.
- 1999 "All Things Considered" features the clash between Pinehurst Resorts and Pinehurst named properties. "The community relationship with Dedman is contentious." Articles are also run in The New York Times and the Wall Street Journal.

1st US Open, Pinehurst #2. Payne Stewart, USA, wins his second U.S. Open and third major championship, one stroke ahead of runner-up Phil Mickelson. The purse is \$3.5 million, and the winner receives \$625,000.



Payne Stewart

Village population 8,200.

Dedman has invested \$100 million in Pinehurst, renovated the Carolina Hotel, reopened the Holly Inn which had been “left for the pigeons” by the previous owners. He also added Pinehurst #7 and Tom Fazio’s Pinehurst #8, and restored Pinehurst #4.

By the start of the second decade of the National, a new team is in place with Barry Embler, who had been the club’s first Director of Finance, and his golf management firm, Signet Golf.

2000 The “Carolina Crusher” is one of the most powerful winter storms on record in parts of North Carolina. Snow begins falling across portions of North Carolina during the afternoon and evening of January 24, as the storm moves north along the North Carolina coast, dropping well over 10 inches of snow throughout central North Carolina in 24 hours. The total in Sanford is 16 inches; in Raleigh it is 24 inches. Carolina is left shivering for days!

Pinehurst (census) population 9,640.

By 2001 approximately 20 additional new homes are being built. The Club initiation fees are \$25 thousand, dues are \$425 a month and the National GC has 350 members of which 120 are Moore County residents.

2001-2004 The dot.com bubble bursts, the September 11 attack leave its mark on National Golf Club. It is a period of... “Management turnover, red ink, economic downturn, plans gone awry.”

Claude Smith retires. Claudia, Ken and Neil Robinette take over control of Tri City in January 2001. They spend three years improving the infrastructure, the golf course, and mending fences with the membership. “Real estate development escalates at a rapid pace.” A new chef (and new named restaurant with a new menu to increase the banquet business) is hired.

The National Golf Club hosts US Open qualifying rounds in 2004 and 2005. It is also a fixture of the NC Golf Panel, ranked in the top 20. (Pinehurst #2 ranked No. 1, #4 ranked No. 10, #8 ranked No. 12. NGC ranked No. 18.)

2005 2nd US Open, Pinehurst #2, Michael Campbell, NZ, wins his only major title, two strokes ahead of runner-up Tiger Woods; third-round leader and two-time U.S. Open champion. The purse is \$6.2 million with \$1.17 million going to the winner.



Michael Campbell

2006 Nicklaus revisits the National. Removes 2 bunkers in front of the 1st green and one from the 3d fairway. “Overall he liked what he saw at the National.”

ClubCorp sells its entire portfolio of golf courses, clubs and resorts to KSL Capital Partners *except* for its interest in Pinehurst Resorts, which is sold to Robert H Dedman Jr, who is already holding a majority interest.

2007-2009 Recession. Sub-prime mortgages cause a global crisis. Housing starts fall.

2010 Pinehurst (census) population 13,124.

- 2011 Renovation of #2 brings back a lot of Ross features which had been removed over the years. The course is “powdered, padded, uplifted and rouged until she looked positively cadaverous.” The firm of Coore & Crenshaw reinstates the course’s natural sandy properties rather than burying them beneath acres of Bermuda rough. Fairways are widened. The greens are replanted with Bermuda, the original roll-offs restored.
- 2012 Greens are rebuilt at National GC, closing the course for three months. “A job well done.” “The greens are restored to their original Jack Nicklaus condition.”
- 2014 3rd US Open, men and women, Pinehurst #2. For the men, Martin Kaymer, Germany, leads wire-to-wire to win his first U.S. Open and second major title, eight strokes ahead of runners-up Erik Compton and Rickie Fowler. The purse is \$9 million, and the winner’s share is \$1.6 million.



Michelle Wie

For the women, it marks the first time that the U.S. Women's Open is played on the same course in the same year as the men’s U.S. Open. Michelle Wie, USA, 24 years old, wins her first major title, two strokes ahead of runner-up Stacy Lewis. The purse is \$4 million, and the winner takes home \$720,000.

Pinehurst is now Moore County’s largest municipality:15,434.

The Village reviews its Master Plan.

The National Golf Club amenities are purchased by Pinehurst Resort and Country Club and renamed Pinehurst National #9. The real estate stays with Tri City. The NPOA takes control of the infrastructure not part of the golf course. It owns and maintains all common property, all the roads, including the borders and plantings, except the roads immediately adjacent to the Clubhouse which, along with the Golf Course, and the accompanying facilities and amenities, are owned by the PCC, Inc.



The sale effectively solidifies the financial security of Pinehurst National Golf Course and the residential neighborhood surrounding it. “NGC has struggled in recent years. Lot sales in the immediate years before Pinehurst Resorts purchased National Golf Club were non-existent.”

The good news is a turnaround... It is reported that of \$11.4 million in real estate sales in 2014 at the National, \$8.4 million occurred after the purchase of NGC by Pinehurst Resorts, all sales by word of mouth. From 2016 through 2018, there are 45 new housing starts. And the National Golf Club gets its Pinehurst name back. It is legally Pinehurst National #9.

- 2015 Pinehurst Resorts invests \$200,000 in the upgrade of the National clubhouse; HVAC, kitchen, ballroom, restaurant & bar, plans on spending \$1,000,000 on the course for maintenance and cart paths.

In May 2015 Pinehurst hosts the Solomon Trophy, an international croquet match between teams from the USA and Great Britain. Pinehurst Resorts is home to three championship croquet courts. Players come from around the country to play six wicket championship croquet. The head professional, Mack Penwell, is a US national champion and now retired.



- 2016 Ballybunion Park opens in October with 26 properties celebrating the traditions of Pinehurst Village with smaller lots, curvilinear streets and traditional architecture yet offering modern taller ceilings, a larger volume and an abundance of glass that opens views - and with a community park in the center. “There is a continuity to

the home design, as homes owners/builders have a pre-determined set of floor plan choices and one architect that designed a series of house plans as a concept for the area.” Homes are geared to those wanting to spend more time on the golf course and less time on exterior maintenance.

2018 Healthcare is now Moore County’s largest industry sector attracting top notch physicians because of the region’s affluent population, but also because of the quality of life and the access to first class educational opportunities. Moore County has a 32.4 to 10,000 physician to resident ratio whereas the national average is 24.4 to 10,000. The FirstHealth Moore Regional Hospital regularly gets high marks for patient satisfaction and clinical excellence.

2019 US Amateur Championship!

2024 Upcoming... US Open!

Why do we live here?

Aesthetic beauty of the properties is protected.
Homes are not cookie cutter.
Properly planned growth.
Small town atmosphere.
Excellent medical care.
We’ve got the pines!
High home value.
Good neighbors.
Good schools.
Low traffic.
No fences.
Safe.



Thanks to the NPOA and the ARB, the Tufts Archives, the County of Moore and others who contributed much to this. My omissions or mistakes in this timeline are certainly unintentional. At my age, anything is possible. --John Winfield



12/10/19 v19

Nicklaus' Major Championships



Number 4



Number 5



Number 10



A perfect tribute to Donald Ross, from Number 11



Number 18



18th Green



Founders Point



Our Clubhouse